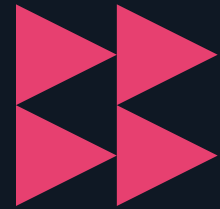


# License Dashboard License Manager Version 12



Empower successful management of your software licenses with License Manager 12 – the next generation of Software Asset Management (SAM) technology. License Manager 12 is the most complete SAM tool available, enabling your organization to optimize and control its data center, cloud, and desktop software estate.

## Features and benefits >>>

- ▶ Save up to 30% on physical, virtual, and cloud software
- ▶ Reduce risk of software compliance failures
- ▶ Import and validate license entitlements and MLS automatically
- ▶ Minimize over-spend on unnecessary licenses
- ▶ Connect to any existing inventory source, including SCCM, vCenter, and ILMT
- ▶ Improve IT budgeting and planning
- ▶ Effectively manage your software estate at a business unit level
- ▶ Prevent over-deployment of software
- ▶ Manage and optimize your cloud and SaaS software spend
- ▶ Optimize license agreement negotiations
- ▶ Dedicated IBM and Oracle optimization modules
- ▶ Build a solid foundation for successful SAM
- ▶ Automatic consolidation of user subscriptions (e.g. Office 365) to users
- ▶ Holds all historic software records
- ▶ Auto links primary users to their devices for subscription-based software licensing

## Manage your software licenses automatically

License Manager automatically scours entitlement sources (including MLS) to ensure all items are checked against manufacturer software catalogues and that special licensing terms – such as upgrades and maintenance – are associated with the required base licenses. It also checks for any additional or improved installation granted by grandfathering rights or tech guarantees.

License Manager needs just a few minutes to achieve what takes a consultant or other license management tools weeks or months.

## Data Centre optimization

License Manager enables users to match discovered products on virtual devices to their physical host device where those installations should be managed by the host. It also allows for the management of mobility across hosts and associated accelerated liability.

You can also manage IBM capacity licensing and Oracle Database installations with captured data from IBM License Metric Tool or Oracle LMS Scripts respectively.

## System and server requirements

License Manager 12 is a client/server application, consisting of a Windows Client, that uses Microsoft .NET Framework v4.6.1 or later and a database hosted on Microsoft SQL Server 2012 or later.

Optional components include the License Dashboard Portal web reporting interface, and the LM API RESTful web services interface. These require IIS 7.5 or later along with .NET Framework v4.5.2 or later. License Dashboard Portal also utilises [Qlik Sense](#).

### Software

- Microsoft SQL Server or Express 2012 or later
- x86 or x64 supported

### Hardware

- Physical or virtual server
- A specification suitable for running SQL Server 2012 or later (See Microsoft best practice guide)
- Database size depends on the number of devices

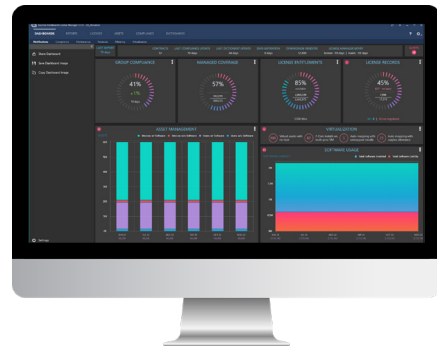
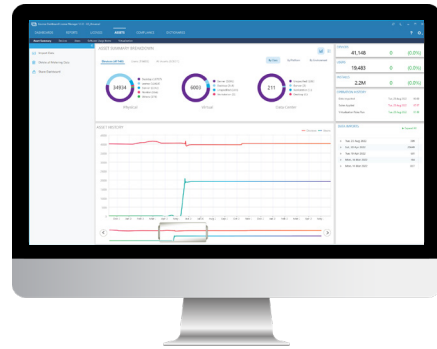
## Clients requirements

### Software

- Microsoft .NET Framework v4.6.1 or later
- Windows 7 or later

### Hardware

- Physical or virtual
- A specification suitable for running the operating system and general applications
- Up to 20 MB of disk space for the client application



**Get started with  
License Dashboard  
License Manager now**

**Speak to our team** ▶▶▶

**Contact  
License Dashboard**

[www.licensedashboard.com](http://www.licensedashboard.com)  
[info@licensedashboard.com](mailto:info@licensedashboard.com)  
+44 (0)1904 562 217

License Dashboard Head Office  
Blenheim House, York Road, Pocklington,  
York, YO42 1NS, UK.

