



Licensing guide

SQL Server licensing

Introduction

SQL Server is a relational database management system that offers a variety of features and capabilities for data storage, processing, analysis, and security. SQL Server can be used for various purposes, such as developing applications, running websites, hosting data warehouses, or supporting business intelligence solutions.

With a basic understanding of the licensing and implications of specific actions, organizations will be better equipped to manage SQL

Server licensing compliance. SQL Server is often considered the most convoluted of the Microsoft products, mainly due to its high price tag and the constantly changing licensing rules. Each version and edition of SQL has differing licensing terms, rights, and functionality. To help you effectively manage and identify how each version and edition is licensed, our specialists have put together a brief overview of each version and how they work to ensure you get the most out of your licensing.

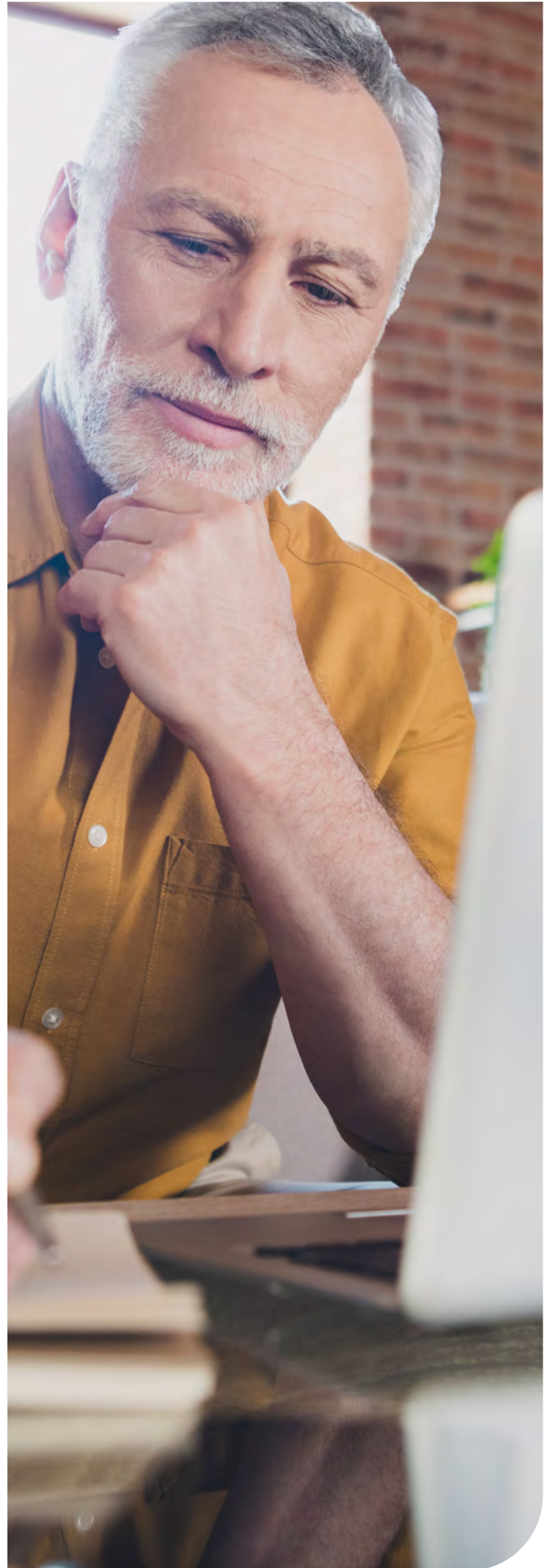


SQL Server Enterprise Core and SQL Server Standard Core

Sold in packs of two cores, SQL Server Enterprise and SQL Server Standard Core have a minimum requirement of four cores per processor or total number of cores on the server, whichever is higher. If licensed without a Software Assurance (SA), virtual SQL instances can be run up to the total number of licensed Cores. Licensing a virtual instance requires SA if the virtual server moves between hosts more than once every 90 days. This benefit is called License Mobility across Server Farms. Licensing a virtual host's physical cores with SA grants an unlimited number of virtual machines with SQL deployed up to the maximum number of VMs the hosts can operate.

SQL Server Standard + Client Access Licenses (CAL)

Licensing SQL under the Client Access Licenses (CAL) model requires each instance of SQL (virtual or physical) to be licensed with a single SQL Server license. Then a choice of User or Device CALs are required for every user or device which can access the server. Access to the server does not have to be direct to require a CAL. Indirect access such as access to a SharePoint server supported by SQL will also require the user or device to have a SQL CAL despite not directly accessing the SQL Server. If the number of users or devices cannot be quantified, then Core licensing is required. Licensing the virtual instance with Software Assurance (SA) is required if the virtual server can move between hosts more than once every 90 days. This benefit is called License Mobility across Server Farms.

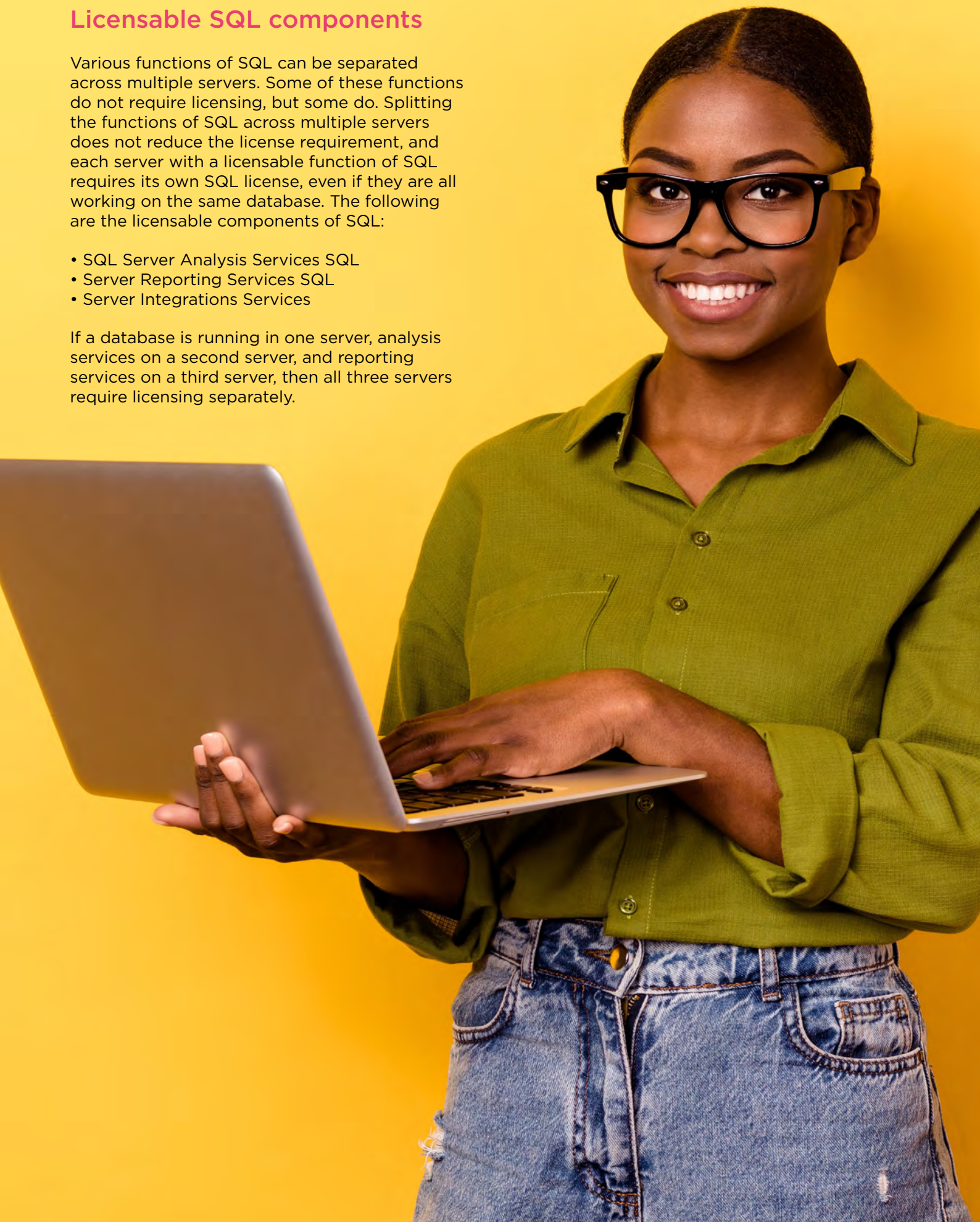


Licensable SQL components

Various functions of SQL can be separated across multiple servers. Some of these functions do not require licensing, but some do. Splitting the functions of SQL across multiple servers does not reduce the license requirement, and each server with a licensable function of SQL requires its own SQL license, even if they are all working on the same database. The following are the licensable components of SQL:

- SQL Server Analysis Services SQL
- Server Reporting Services SQL
- Server Integrations Services

If a database is running in one server, analysis services on a second server, and reporting services on a third server, then all three servers require licensing separately.



SQL Server Enterprise vs Standard

When considering the two main SQL editions, Standard and Enterprise, organizations must account for a list of features before choosing between them. It is important to understand the intentions behind the two different editions. The Enterprise edition provides high end data-center availability, high performance, and an array of business intelligence.

The Standard edition of SQL Server 2016 offers many of the same features with limitations. This edition is intended to provide smaller projects with all the necessary tools and features at a lower cost and less need for IT staff. The Standard edition is a highly effective version for limited scope databases.

Although both editions have the same database size limit of 524PB, the difference in scale is the editions' ability to utilise the available memory on a server as well as a limit to the maximum number of cores which the Standard edition can use (this is from a technical perspective all cores would still require licensing).

Regarding high availability, the differences are more apparent. There are a number of features that are not available in the Standard edition, some of the most important being the lack of always-on availability groups, online page and file restore, online indexing, online schema change, fast recovery, mirrored backups, and hot add memory and CPU.

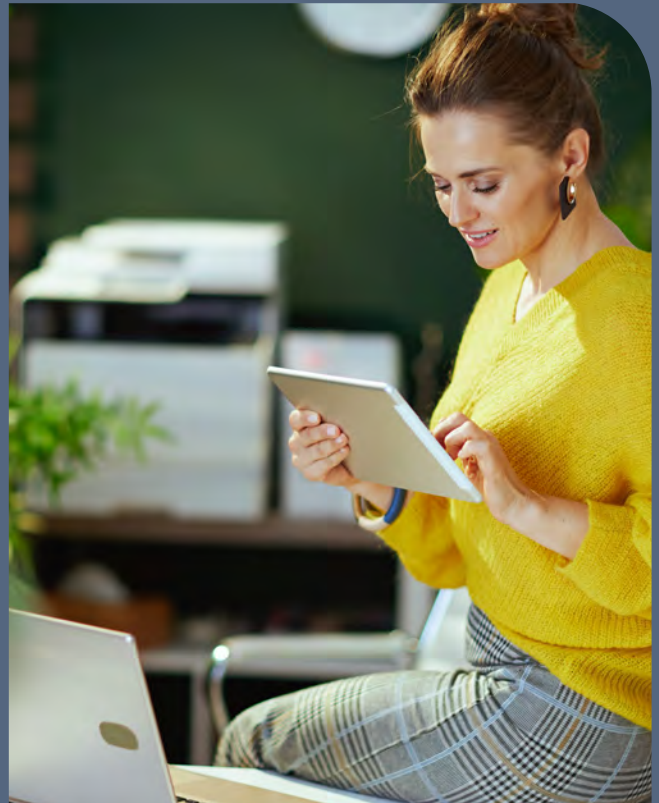
Additional licensing considerations

If you are interested in SQL Server or would like to know more about its licensing, you should also research the following topics:

- License Mobility
- Processor to Core transitions
- Extended Support
- Multiplexing
- Remote Access
- Development Licensing (Visual Studio MSDN)

SQL Server can be complex, but our specialists are here to help you understand the different elements of licensing and how to manage it properly. Get in touch to find out more about SQL Server licensing.

Contact our specialists 





About License Dashboard

Our mission is to enable Software Asset Management (SAM), IT, Finance, and Procurement Teams to make informed decisions and take proactive action. Alongside our partners, we offer the most valuable and powerful license management services on the market.

We use a blend of in-house SAM technologies and licensing expertise to take on the time-consuming, complex license management tasks and produce the business-critical license intelligence required to move forward. From point-in-time Effective Licensing Position (ELP) programs through to ongoing license compliance and SAM initiatives, License Dashboard and its partners will help you establish, understand, optimize, and manage your software assets. All of which can lead to savings of up to 30% in your overall IT expenditure.

Contact us

Get in touch to find out more about SQL Server licensing.

[Discover more](#) ▶▶

Alternatively, please email us at hello@licensedashboard.com or call 01904 562217 and one of our specialists will be in touch to discuss your requirements.

